

UNIT 6 Time

LESSON A 1 Before you listen

Listening

- A** Look at the picture. What do you see?
B Point to a person: eating • talking • taking a nap • drinking coffee • reading a schedule • buying a snack



2 Listen



STUDENT TK 25
CLASS CD2 TK 2

A Listen. Write the letter of the conversation.



STUDENT TK 25
CLASS CD2 TK 2

B Listen again to the conversations. Circle the time you hear.

- | | | | | | |
|-----------------|-------|------|----------|-------|-------|
| A. <u>10:30</u> | 11:30 | 2:30 | D. 10:15 | 10:45 | 10:40 |
| B. 5:30 | 5:40 | 6:30 | E. 10:45 | 12:45 | 2:45 |
| C. 11:00 | 12:00 | 1:00 | F. 11:30 | 7:30 | 12:30 |

Listen again. Check your answers.

3 After you listen

Talk with a partner. Take turns. Ask and tell the time.

What time is it?

It's ten o'clock.



1. ten o'clock



2. ten-thirty



3. six-fifteen



4. five-twenty



5. twelve-fifty



6. two-forty-five



7. seven-thirty



8. nine-oh-five

LESSON B What do you do in the evening?

1 Grammar focus: simple present; What questions

Questions

What	do you do	in the evening?
	does he do	
	does she do	
	do they do	

Answers

I	read.
He	reads.
She	reads.
They	read.

With *he* and *she*:
 do → does
 exercise → exercises
 go → goes
 study → studies
 watch → watches

Turn to page 143 for a complete grammar chart.

2 Practice

A Write. Complete the sentences. Use *do* or *does* and the correct form of the verb.



1. **A** What do they do in the evening?
B They watch TV.
 (watch / watches)



2. **A** What _____ he do in the afternoon?
B He _____.
 (study / studies)



3. **A** What _____ she do in the morning?
B She _____.
 (exercise / exercises)



4. **A** What _____ they do on Sunday?
B They _____ to the park.
 (go / goes)



CLASS CD2 TK 3

Listen and repeat. Then practice with a partner.

B Listen to the Wilder family's schedule. Then listen and repeat.

SATURDAY MORNING

Jill



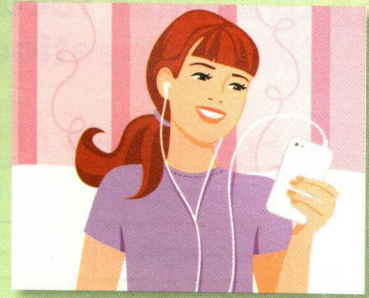
Jill watches TV.

SATURDAY AFTERNOON



She plays soccer.

SATURDAY EVENING



She listens to music.

Mr. and Mrs. Wilder



Mr. and Mrs. Wilder go shopping.



They work in the garden.



They pay bills.

Listen. Then talk with a partner. Change the bold words and make conversations.

- A** What **does Jill** do on **Saturday morning**?
B She usually **watches TV**.

1. Jill / Saturday morning
2. Mr. and Mrs. Wilder / Saturday evening
3. Mr. and Mrs. Wilder / Saturday morning
4. Jill / Saturday afternoon
5. Mr. and Mrs. Wilder / Saturday afternoon
6. Jill / Saturday evening

3 Communicate

Talk with your classmates. Ask questions about the weekend.

What do you do on Saturday morning?

I usually go to the grocery store.

USEFUL LANGUAGE

*Usually means most of the time.
 Always means all of the time.*

LESSON C I go to work at 8:00.

1 Grammar focus: *at, in, and on* with time; *When* questions

Prepositions of time

at	1:30	in	the morning	on	Saturday
	night		January		the weekend

Questions

When	do you go to work?
	does he have class?

Answers

I go to work at 8 o'clock.
He has class on Monday.

Turn to page 143 for a complete grammar chart.

With *he* and *she*:
have → has

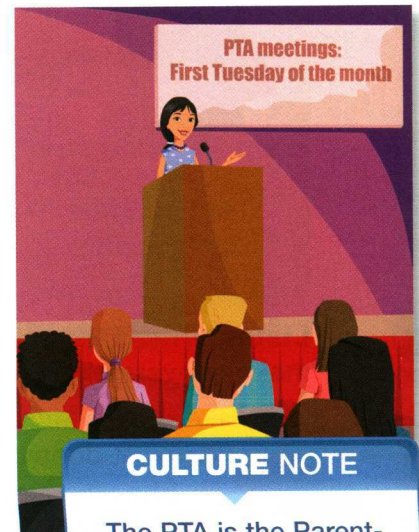
2 Practice

A Write. Complete the sentences. Use *at, in, or on*.

- I have English class on Tuesday and Thursday.
- My sister usually has class _____ Saturday.
- I do homework _____ night.
- My father goes to work _____ the morning.
- He always catches the bus _____ 8:45.
- Sometimes, my mom goes to PTA meetings _____ the evening.
- I usually go on vacation _____ July.

B Write. Read the answers. Complete the questions.

- | | |
|---|---|
| 1. A When _____ <u>do</u> you _____ <u>go</u> on vacation? | 3. A When _____ your father _____ the bus? |
| B I usually go on vacation in July. | B He always catches the bus at 8:45. |
| 2. A When _____ your sister _____ class? | 4. A When _____ you _____ homework? |
| B She usually has class on Saturday. | B I always do homework at night. |



CULTURE NOTE

The PTA is the Parent-Teacher Association at a school. Parents and teachers meet in a group to talk about school.



CLASS CD2 TK 6

Listen and repeat. Then practice with a partner.

C Listen. Then talk with a partner. Change the bold words and make conversations.

Mrs. Wilder's Schedule						
SUNDAY	MONDAY	TUESDAY	WEDNESDAY	THURSDAY	FRIDAY	SATURDAY
rest	11:00 a.m. volunteer at the high school	7:30 p.m. cooking class	2:30 p.m. driving lessons	4:00 p.m. Spanish class	6:30 p.m. PTA meeting	9:00 a.m. go shopping

A When does Mrs. Wilder **volunteer at the high school**?

B She **volunteers at the high school on Monday**.

A What time?

B At **11:00 in the morning**.

CULTURE NOTE

Many people in the U.S. do volunteer work in their free time. Volunteers do not receive money for their work.

1. volunteer at the high school
2. take driving lessons
3. have cooking class
4. have Spanish class
5. go shopping
6. go to the PTA meeting

USEFUL LANGUAGE

*She **has** cooking class on Tuesday.*

*She **goes to** cooking class on Tuesday.*

3 Communicate

Write. What are five things you do every week? Make a list.

1. call my mother
2. go to English class
3. work
4. visit friends
5. go to the grocery store

Talk with a partner. Ask questions about your partner's list.

When do you call your mother?

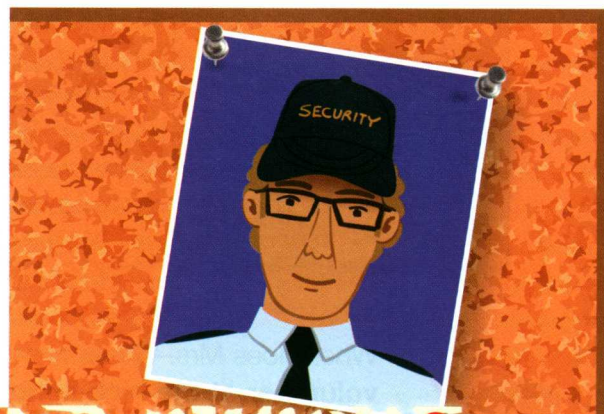
I usually call my mother on Sunday at nine o'clock at night.

LESSON D Reading

1 Before you read

Talk. Bob has a new job. Look at the picture. Answer the questions.

1. What is Bob wearing?
2. What is his new job?



2 Read



STUDENT TK 26
CLASS CD2 TK 8

Listen and read.

Meet Our New Employee: Bob Green

Please welcome Bob. He is a new security guard. He works the night shift at the East End Factory. Bob starts work at 11:00 at night. He leaves work at 7:00 in the morning.

Bob likes these hours because he can spend time with his family. Bob says, "I eat breakfast with my wife, Arlene, and my son, Brett, at 7:30 every morning. I help Brett with his homework in the afternoon. I eat dinner with my family at 6:30. Then we watch TV. At 10:30, I go to work."

Congratulations to Bob on his new job!

To help you remember, ask questions as you read:
Who is this reading about?
What is this reading about?
Where does Bob work?
When does Bob work?

3 After you read

A Read the sentences. Are they correct? Circle Yes or No.

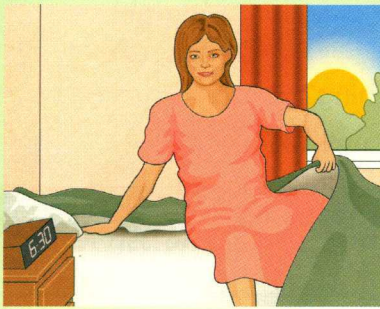
- | | | |
|--|-----|-------------------------------------|
| 1. Bob is a new police officer. | Yes | <input checked="" type="radio"/> No |
| 2. He starts work at 7:00 at night. | Yes | No |
| 3. He likes to spend time with his family. | Yes | No |
| 4. Bob helps Brett with his homework. | Yes | No |

Write. Correct the sentences.

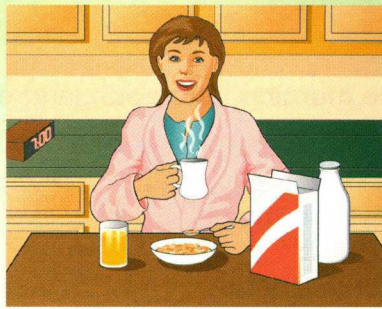
1. *Bob is a new security guard.*

B Write. Answer the questions about Bob's schedule.

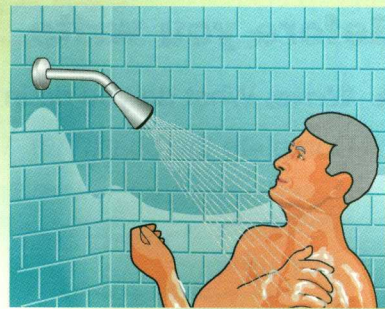
1. Where does Bob work? _____
2. Who is Arlene? _____
3. What does Bob do at 7:30 every morning? _____
4. When does the Green family watch TV? _____



1. *get up*



2.



3.



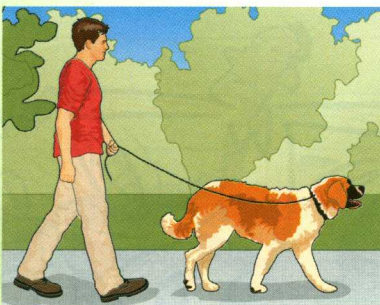
4.



5.



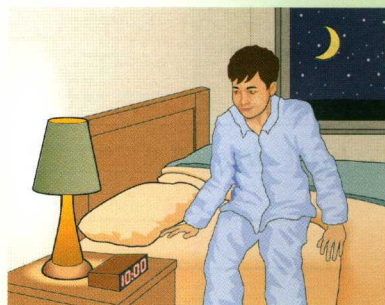
6.



7.



8.



9.



A Write the words in the picture dictionary. Then listen and repeat.

- | | | |
|---------------|-------------|-----------------------------|
| eat breakfast | get dressed | take a shower |
| eat dinner | get up | take the children to school |
| eat lunch | go to bed | walk the dog |

B Talk with a partner. Ask and answer questions about your daily activities.

When do you eat breakfast?

I usually eat breakfast at 6:45.

LESSON E Writing

1 Before you write

A Write. What do you do in the morning, afternoon, and evening?

Complete the chart.

Morning	Afternoon	Evening
<i>get up</i>		
<i>get dressed</i>		

Talk with a partner about your daily schedule.

What do you do in the morning?

I get up. I get dressed. . . .

Write sentences.

Morning

I get up.

I get dressed.

Afternoon

Evening



B Write. Complete the paragraph. Use *in*, *on*, and *at*.

Leave space at the beginning of a paragraph. This space is an *indent*.



Hamid
August 10

My Daily Schedule

Let me tell you about my daily schedule. On Monday, I usually get up ___ 6:30 ___ the morning. I eat breakfast and get dressed. ___ 8:00, I go to work. I work at a department store. I eat lunch ___ 12:30. ___ the afternoon, I take a break ___ 3:30. I finish work ___ 5:00. I go to a fast-food restaurant or a coffee shop for dinner. I get home ___ 6:45 or 7:00. I read ___ the evening. I go to bed ___ 10:00.

2 Write

Write a paragraph about your daily schedule.

3 After you write

A Read your paragraph to a partner.

B Check your partner's paragraph.

- What does your partner do in the evening?
- Is there an indent at the beginning of the paragraph?

LESSON F Another view

1 Life-skills reading

Class Schedule: Spring Semester			
BUSINESS			
Business English	MTuWThF	5:00–7:30 p.m.	3/16–5/25
Keyboarding	MWF	1:00–3:00 p.m.	1/15–5/25
Introduction to Computers	TuTh	9:30–11:30 a.m.	3/17–5/24
Word Processing	TuTh	6:30–9:30 p.m.	3/17–5/24
ENGLISH AS A SECOND LANGUAGE			
ESL Beginning	MTuWThF	8:15–10:15 a.m.	1/15–5/25
ESL Intermediate	MTuWThF	8:15–10:15 a.m.	1/15–5/25
ESL Citizenship	Sat	8:00–10:45 a.m.	1/20–5/19
ESL Citizenship	Sun	1:45–4:30 p.m.	1/21–5/20
ESL Pronunciation	MWF	12:00–1:00 p.m.	3/16–5/25
ESL Writing	MTuWTh	12:00–1:15 p.m.	3/16–5/24

USEFUL LANGUAGE

<i>M</i>	<i>Monday</i>
<i>T or Tu</i>	<i>Tuesday</i>
<i>W</i>	<i>Wednesday</i>
<i>Th</i>	<i>Thursday</i>
<i>F</i>	<i>Friday</i>
<i>Sat</i>	<i>Saturday</i>
<i>Sun</i>	<i>Sunday</i>

A Read the questions. Look at the schedule. Fill in the answer.

- What time does the ESL Citizenship class start on Saturday morning?
 - at 7:45
 - at 8:00
 - at 8:15
 - at 10:45
- When does the Introduction to Computers class start?
 - on January 15
 - on March 16
 - on March 17
 - on March 19
- When is the ESL Pronunciation class?
 - on Monday, Wednesday, and Friday
 - on Tuesday and Thursday
 - on Monday, Tuesday, and Thursday
 - on Monday, Tuesday, and Wednesday
- When does the spring semester end?
 - in January
 - in February
 - in March
 - in May

B Talk with a partner. Ask and answer questions about the schedule.

What time does the Business English class start?

It starts at five o'clock.

2 Grammar connections: *start / end and open / close*

Use *start* and *end* for events.

Use *open* and *close* for places.

What time does the meeting **start**?
What time does it **end**?

What time does the store **open**?
What time does it **close**?

A Talk with a partner. Ask and answer questions about the notices. Take turns.

A What time does the computer club meeting *start*?

B At 5:00 p.m. What time does the library *close*?

A At 8:00 p.m.

Computer Club Meeting
Every Tuesday
5:00 p.m. – 7:30 p.m.
At the Lincoln Library
Library hours:
8:00 a.m. – 8:00 p.m.

The History of Rock Music
See a great show about rock music!
Show: 7:00 p.m. – 9:15 p.m.,
Wednesday
Ticket office hours:
6:00 p.m. – 11:00 p.m.

Cooking Class with Yolanda
Learn to cook with
Yolanda Gomez at
Yoli's Café.
9:00 a.m. – 11:00 a.m.
on Saturdays
Restaurant hours:
12:00 p.m. – 10:00 p.m.

Basketball Game
Rockets vs. Leopards
Game time: 7:30 p.m. –
10:00 p.m., Friday
Gym hours:
4:30 p.m. – 10:30 p.m.

B Talk with your partner. Write times for the signs. Then share your information with the class.

A What time does the park open?

B How about 9:00 a.m.?

A No. That's too late. How about 7:00 a.m.?

B OK. And it closes at . . .

City Park Hours

_____ to _____ every day

Free Music

_____ to _____ on Sundays

Free Beginner English Class

_____ to _____ on Fridays in Room 28
at Central Community Center

Center Hours: _____ to _____
Monday – Friday

3 Wrap up

Complete the **Self-assessment** on page 138.

3 Pronunciation: intonation in questions

A Listen to the intonation in these questions.

Where is the bank?

Is the bank on Broadway?

When is your class?

Is your class in the morning?

B Listen and repeat.

Wh- questions

- A** Where is the post office?
B It's on First Street.
- A** What time do they eat dinner?
B They eat dinner at 6:30.

Yes/No questions

- A** Are you from Mexico?
B Yes, I am.
- A** Does he start work at 7:00?
B No, he doesn't.

C Talk with a partner. Ask and answer the questions.

- What time do you go to bed?
- When is your birthday?
- Where is your supermarket?
- What time is your English class?
- Do you visit your friends on the weekend?
- Do you work in the evening?
- Do you volunteer?
- Do you watch TV in the afternoon?

D Write five questions.

What's your name?

- _____
- _____
- _____
- _____
- _____

Talk with a partner. Ask and answer the questions. Use correct intonation.

What's your name?

My name is Teresa.