

5 Around town

LESSON A **1** Before you listen

Listening

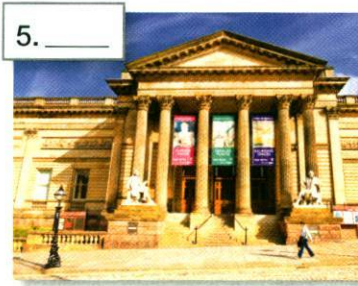
- A** Look at the picture. What do you see?
- B** Point to: a grocery store • a library • a restaurant
a hospital • a house • a street



Unit Goals
Identify places around town
Identify locations of places
Write directions to a place

2 Listen

A Listen. Write the letter of the conversation.



B Listen again to the conversations. Circle the street you hear.

- | | | |
|----------------------|-------------------|--------------|
| A. 15th Avenue | <u>5th Avenue</u> | 50th Avenue |
| B. C Street | G Street | Z Street |
| C. 7th Street | 16th Street | 70th Street |
| D. C Street | G Street | Z Street |
| E. Fir Avenue | First Avenue | Third Avenue |
| F. Thirteenth Avenue | Thirtieth Avenue | Third Avenue |

Listen again. Check your answers.

3 After you listen

Write. How many places are in your neighborhood?

museums _____ 0 _____	libraries _____	schools _____
pharmacies _____	restaurants _____	post offices _____
bus stops _____	parks _____	hospitals _____

Work with a partner. Ask and answer questions.

How many museums are in your neighborhood?

None.

USEFUL LANGUAGE

When 0 means zero, say none.

LESSON B It's on the corner.

1 Grammar focus: *on, next to, across from, between, on the corner of*

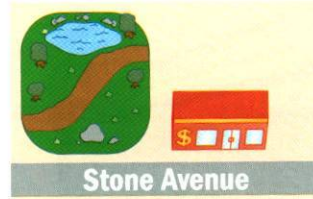
Question

Where's the bank?

Answers



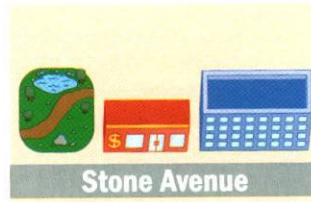
It's **on** Stone Avenue.



It's **next to** the park.



It's **across from** the library.



It's **between** the park and the school.



It's **on the corner of** Bridge Avenue and Water Street.

2 Practice

A Write. Look at the map. Complete the sentences.

- A** Where's the park?

B It's next to the bank.
- A** Where's the library?

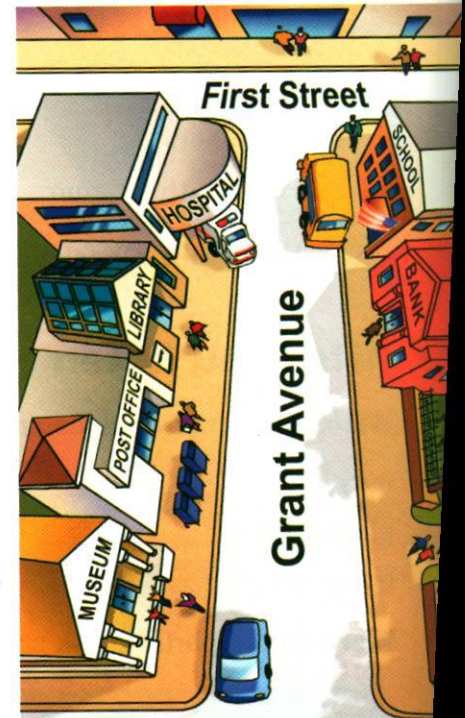
B It's _____ the bank.
- A** Where's the school?

B It's _____ First Street and Grant Avenue.
- A** Where's the hospital?

B It's _____ Grant Avenue.
- A** Where's the bank?

B It's _____ the school and the park.
- A** Where's the post office?

B It's _____ the library.



CLASS CD1 TK 43

Listen and repeat. Then practice with a partner.

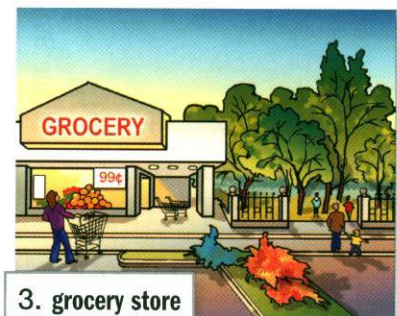
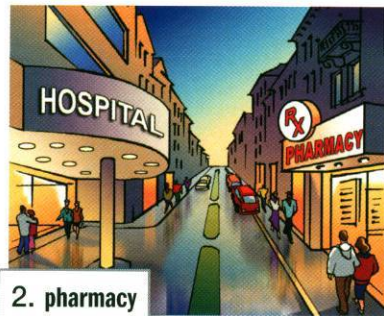
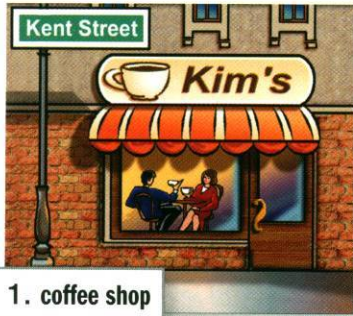
B Listen and repeat.

- A** Excuse me. **Where's Kim's Coffee Shop?**
B It's **on Kent Street**.
A Sorry. Could you repeat that, please?
B It's **on Kent Street**.
A Oh, OK. Thanks.

USEFUL LANGUAGE

*Could you repeat that, please?
 Sorry, I didn't get that.*

Talk with a partner. Change the bold words and make conversations.



Now practice this conversation with the map on page 60.

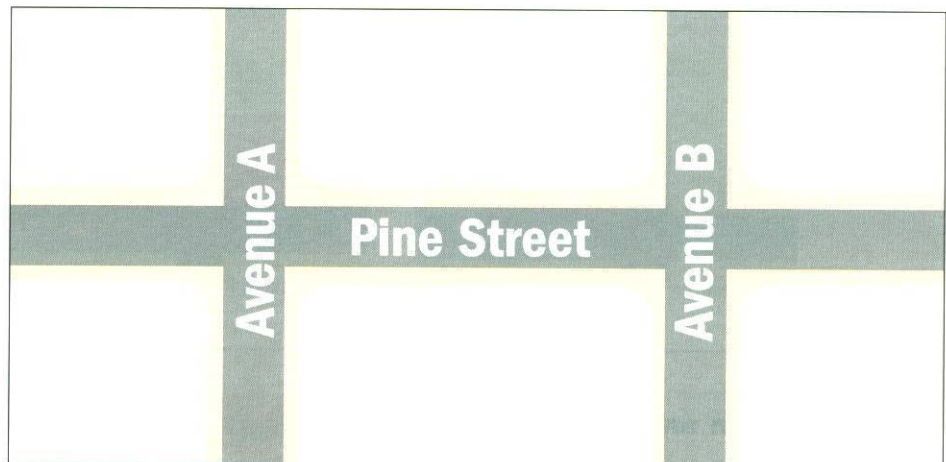
3 Communicate

A Talk with a partner. Look at the map on page 60. Take turns. Give directions. Guess the place.

- A** It's on the corner of First Street and Grant Avenue. It's across from the hospital.
B The school?
A That's right.

B Draw these places on the map. Talk with a partner. Ask and answer questions about your maps.

- bank
- bus stop
- coffee shop
- grocery store
- hospital
- house



LESSON C Go two blocks.

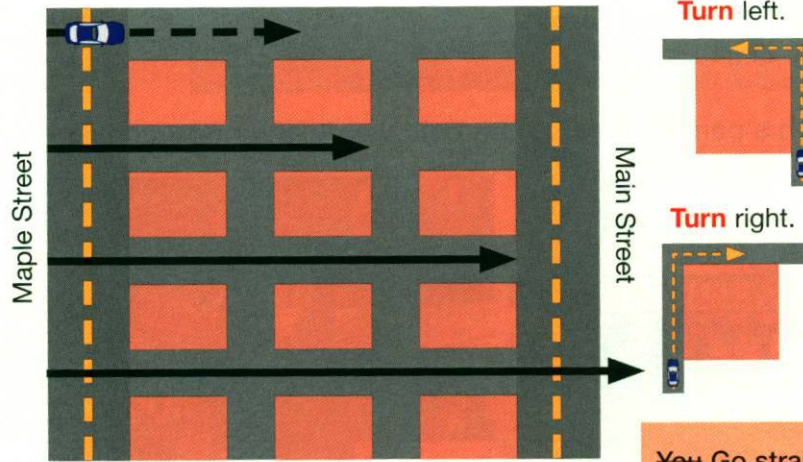
1 Grammar focus: imperatives

Go straight ahead.

Go two blocks.

Go to Main Street.

Cross Main Street.



You Go straight ahead.

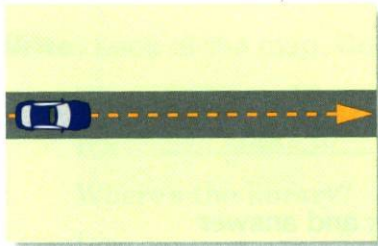
2 Practice

A Write. Match the pictures and the directions.

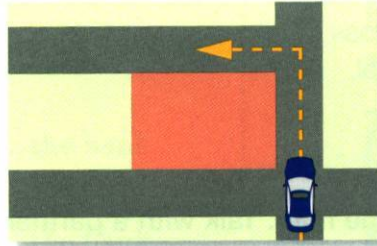
Cross Union Street.
Go straight ahead.

Go three blocks.
Go to Main Street.

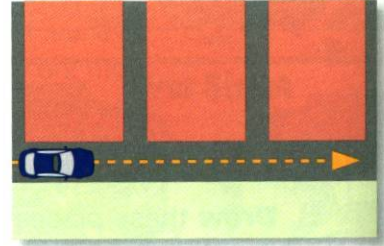
Turn left.
Turn right.



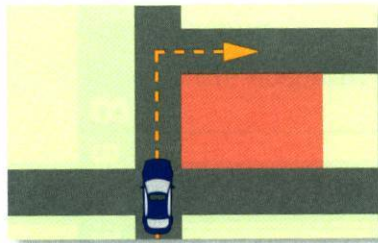
1. Go straight ahead.



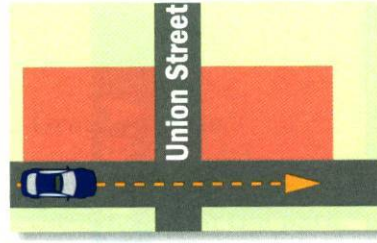
2. _____



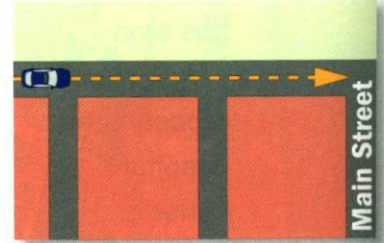
3. _____



4. _____



5. _____



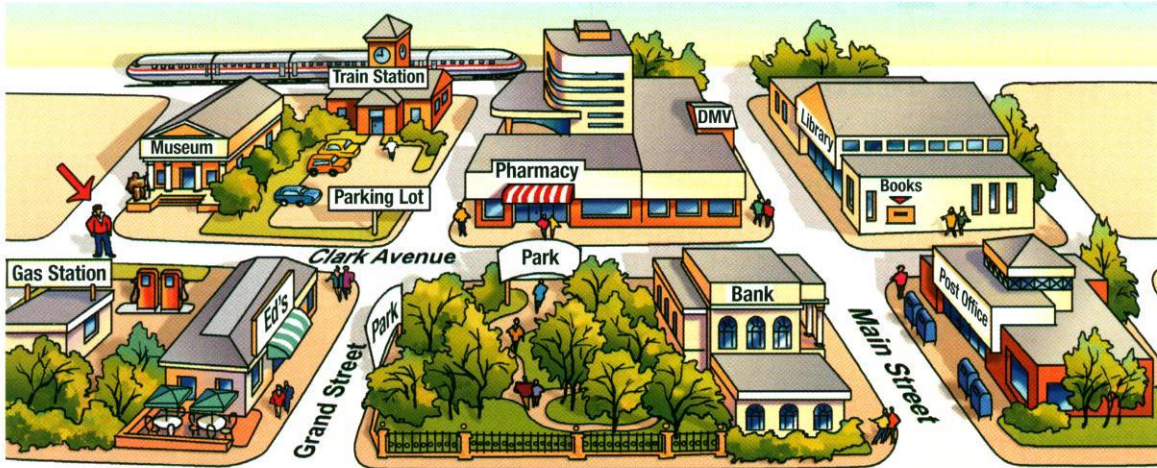
6. _____



Listen and repeat.

CLASS CD1 TK 45

B Read the directions. Look at the map. Write the places.



1. Go two blocks. Turn left. It's across from the library.
2. Go straight. Cross Grand Street. Turn right on Main Street. It's across from the post office.
3. Go to Grand Street. Turn left. It's next to the parking lot on Grand.
4. Go one block. Turn right on Grand Street. It's across from Ed's Restaurant.

_____ the DMV

Listen and repeat.

C Talk with a partner. Look at the map in 2B. Change the bold words and make conversations.

- A** Excuse me. How do I get to the **DMV**?
B **Go two blocks. Turn left. It's on Main Street.**
A OK. **Go two blocks. Turn left. It's on Main Street.**
B Right.
A Thank you.

CULTURE NOTE

The DMV is the Department of Motor Vehicles. You can get a driver's license there.

- | | | |
|----------------|-------------|----------------|
| 1. DMV | 3. pharmacy | 5. hospital |
| 2. parking lot | 4. library | 6. post office |

3 Communicate

Talk with a partner. Give directions to a building on the map in 2B. Your partner names the building.

Go two blocks. Turn left. It's on Main Street.
 The DMV.

LESSON D Reading

1 Before you read

Talk. Look at these photos of Sandra's new neighborhood. Answer the questions.

1. What are the places in her neighborhood?
2. What can you do in these places?



2 Read



STUDENT TK 23
CLASS CD1 TK 47

Listen and read.

Hi Angela,

I love my new house. My neighborhood is great! Here are some pictures. There is a school on my street. My children go to the school. They like it a lot. There is a community center across from the school. My husband works at the community center. He walks to work. There is a grocery store next to my house. It's a small store, but we can buy a lot of things. There is a good Mexican restaurant on Second Street. It's right across from my house.

I like it here, but I miss you. Please write.

Your friend,
Sandra

When you see pronouns (*he, it, they*), ask *Who is the writer talking about?* Look at the sentences before a pronoun to find the answer.

3 After you read

A Read the sentences. Are they correct? Circle Yes or No.

- | | | |
|--|-----|-------------------------------------|
| 1. Sandra lives on Summit Street. | Yes | <input checked="" type="radio"/> No |
| 2. There is a school on Sandra's street. | Yes | No |
| 3. There is a community center next to the school. | Yes | No |
| 4. Sandra's husband works at the community center. | Yes | No |
| 5. Sandra's husband drives to work. | Yes | No |

Write. Correct the sentences.

1. Sandra lives on Second Street.

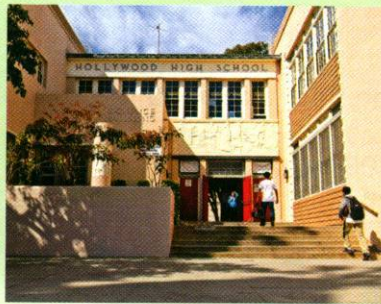
B Write. Answer the questions about Sandra's neighborhood.

1. Where is the school? _____
2. Where is the grocery store? _____
3. Is the restaurant good? _____

4 Picture dictionary Places around town



1. a shopping mall



2. _____



3. _____



4. _____



5. _____



6. _____



7. _____



8. _____



9. _____

A Write the words in the picture dictionary. Then listen and repeat.

- | | | |
|-----------------------|------------------|------------------|
| an apartment building | a hardware store | a police station |
| a courthouse | a high school | a senior center |
| a day-care center | a playground | a shopping mall |

B Talk with a partner about your neighborhood.

There's a playground in my neighborhood.

Where is it?

It's across from the bank.

CULTURE NOTE

Most elementary school students are 5 to 10 years old.

Most middle school students are 11 to 13 years old.

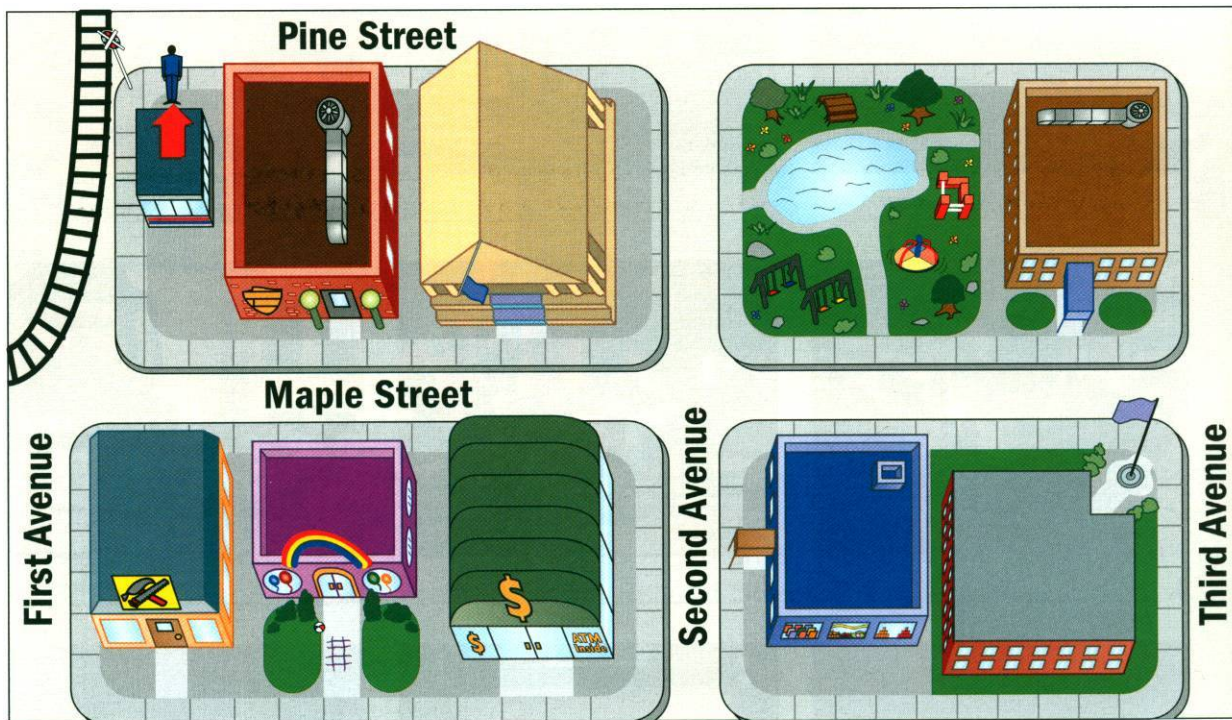
Most high school students are 14 to 18 years old.

LESSON E Writing

1 Before you write



A Listen. Draw the way from the train station to the school.



Write. Look at the map. Complete the directions from the train station to the school.

across from go straight on the corner of turn right
cross one block straight ahead

START

1. From the train station, turn right.



2. *Go straight* on Pine Street.

3. _____ on Second Avenue.

4. Go _____.

5. _____ Maple Street. Then turn left on Maple Street.

6. Walk _____ to the corner.

7. The school is _____ Maple Street and Third Avenue.


FINISH

8. It's _____ the apartment building.




Talk with a partner. Give different directions to get from the train station to the school.

B Write. Add capital letters.



Colgate Adult School



Street names begin with capital letters:
Maple Street
Second Avenue
National Boulevard

Directions to Colgate Adult School

From the courthouse:
 Turn left on ^Mmaple^S street.
 Go to the corner, and cross second avenue.
 Go straight one block to third avenue.
 The school is on the corner of maple street and third avenue.

C Write. Work with a partner. Complete the chart. Write four streets near your school. Write four places near your school.

Streets	Places

2 Write

Draw a map first. Show directions to your school. Start from a bus stop, a train station, a subway stop, a restaurant, or your home.

Write the directions to your school.

3 After you write

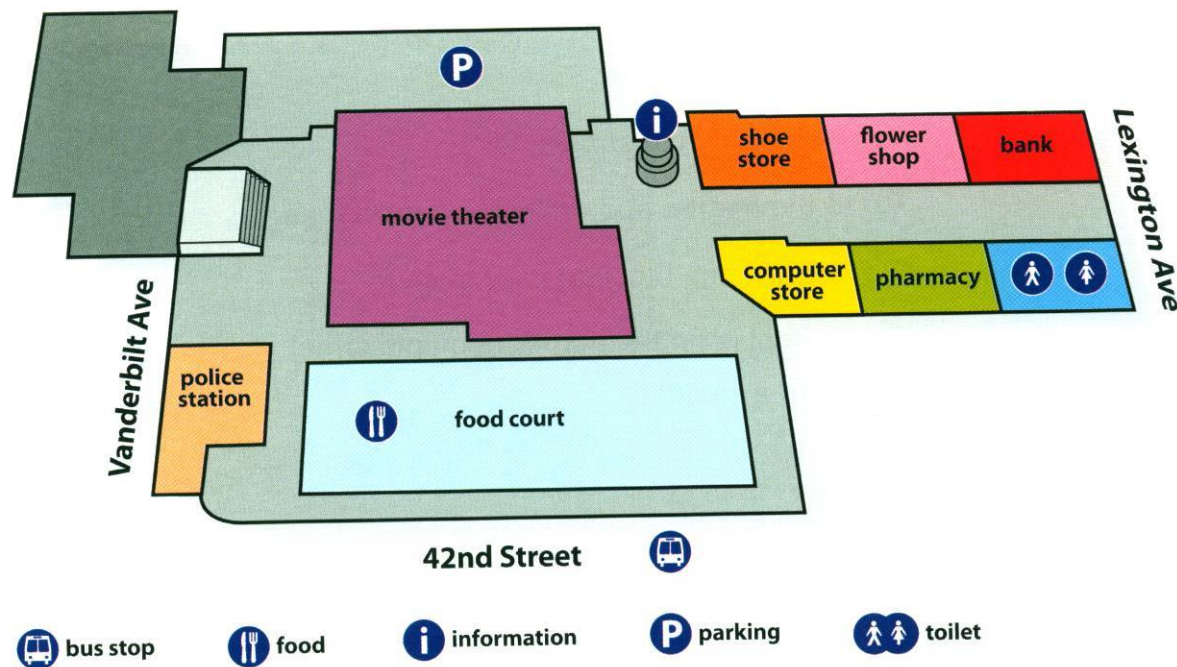
A Read your directions to a partner.

B Check your partner's directions.

- What are the street names?
- Do all the street names have capital letters?

LESSON F Another view

1 Life-skills reading



A Read the questions. Look at the map. Fill in the answer.

- Where is the pharmacy?
 - It's between the shoe store and the bank.
 - It's on Lexington Avenue.
 - It's next to the computer store.
 - It's across from the shoe store.
- Where is the bus stop?
 - It's on Lexington Avenue.
 - It's on 42nd Street.
 - It's on Vanderbilt Avenue.
 - It's on the corner of Lexington Avenue and 42nd Street.
- Where is the police station?
 - It's on Vanderbilt Avenue.
 - It's next to the shoe store.
 - It's on Lexington Avenue.
 - It's on the corner of Lexington Avenue and 42nd Street.
- Where is the flower shop?
 - It's next to the police station.
 - It's across from the computer store.
 - It's between the shoe store and the bank.
 - It's on Vanderbilt Avenue.

B Talk with your classmates. Ask and answer the questions.

- What places in your neighborhood do you go to every week?
- Where do you go on the weekend?

2 Grammar connections: *negative imperatives*

Affirmative	Negative	
Turn right on Elm Street. Use cell phones outside.	Don't turn left on Elm Street. Don't use cell phones in the library.	don't = do not

A Work with a partner. Match the signs and the words.



1. e

2. _____

3. _____



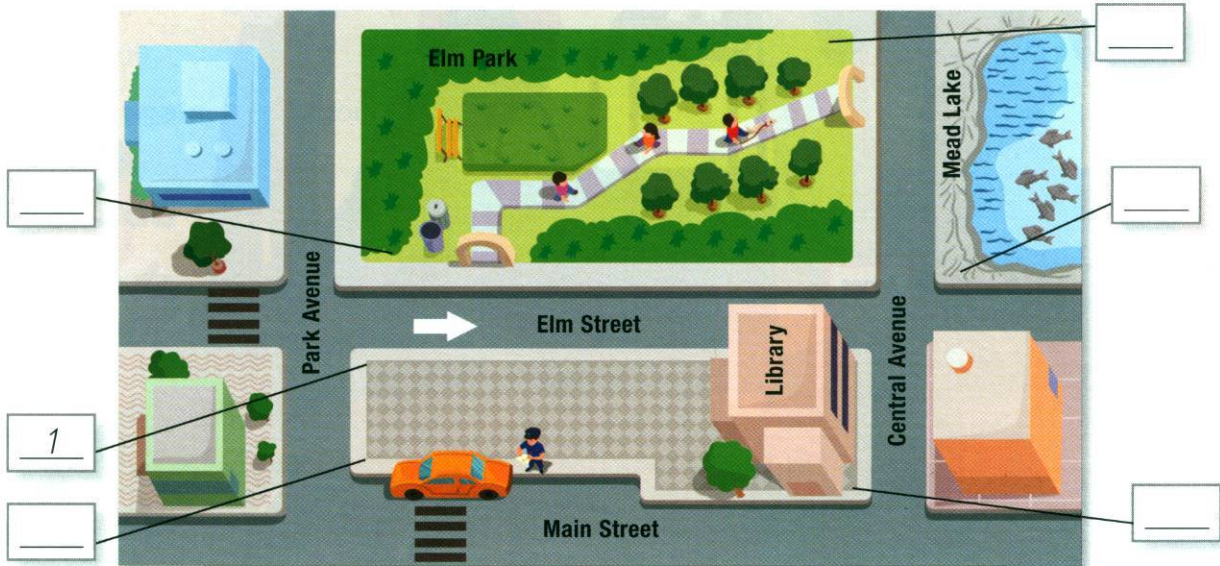
4. _____

5. _____

6. _____

- a. Don't park here.
- b. Don't litter.
- c. Don't ride bicycles.
- d. Don't use cell phones.
- e. Don't turn left.
- f. Don't fish.

B Work with your partner. Where do the signs go? Write the numbers from 2A on the map.



A Don't turn left on Elm Street. That's number one. That goes here.

B Don't use cell phones in . . .

3 Wrap up

Complete the **Self-assessment** on page 138.